

# parkell today

Q U A R T E R L Y

A Division of DirectaDentalGroup

WE HAVE  
THE CURE.

NEW!  
Curing Light  
p36



Visit [Parkell.com](http://Parkell.com) for more  
**special offers, clinical resources,**  
and to view our complete product line.

# Parkell Today *QUARTERLY*— Introducing a Contemporary Classic

Many of you are used to receiving *Parkell Today* every month for the past several decades! In fact, 'PT' has become somewhat of an icon in the dental industry. FRET NOT! We are not getting rid of *Parkell Today*. We're simply moving toward a more "GREEN" way of providing *Parkell Today* to you. We realize that many folks these days, rely on their cell phones, tablets and computers to research products, gather information, shop and more.

So, in addition to "getting with the times", we also maintain a great respect for the environment and our majestic forests. It was these factors that made us decide to mail *Parkell Today* to

you 4 times per year (instead of 12 times). And, while we are at it, we decided to listen to our customers and reduce the size of the magazine for easy storage and referencing.

For those who look forward to our FREE CE every month, in addition to being in each issue of *Parkell Today Quarterly*, FREE CE will also be available every month online at [Parkell.com/Resources](http://Parkell.com/Resources). So check back each month, or better yet, go to the [Parkell.com](http://Parkell.com) homepage to join our email list and you'll be notified when a new article has been posted!

Thanks for your on-going loyalty and support of Parkell! ■

## Table of Contents

**STAY CONNECTED!**  [twitter.com/ParkellTweets](https://twitter.com/ParkellTweets)  [linkedin.com/company/parkell-inc](https://linkedin.com/company/parkell-inc)  
 [facebook.com/parkell](https://facebook.com/parkell)  [instagram.com/Parkell\\_Inc](https://instagram.com/Parkell_Inc)

### ADHESIVE SYSTEMS

Brush&Bond®	6
Brush&Bond® Universal	6
Ea-Z-y Primer®	6
MTL-V Metal Primer™	14

### CEMENTS & DESENSITIZING

Amalgambond® PLUS	16
BluSep™	14
C&B-Metabond® Quick	14
E.T.C.™ Easy Temporary Cement	15
MetaSEAL®	17
Pain-Free™ Gel	17
Parkell® Universal Adhesive	9
Retrieve™ DC	15
SEcure®	13

### ETCHING

Parkell® Etching Gel	8
----------------------	---

### GLAZES & REPAIR

Add&Bond™	27
DuraFinish™	27

### COMPOSITES

Epic®-TMPT	27
HyperFIL®	4
Parkell® LC-Base	3

### POST & CORE MATERIALS

Absolute Dentin®	7
C-I™ White Glass Fiber Posts	32

### CROWN & BRIDGE MATERIALS

Absolute Polishers™	29
SmarTemp® Dual Cure	29
SNAP®	29

### CROWN & BRIDGE / ACCESSORIES

Diamond Burs	33
Hedgehog Burs™	33
Mixing & Intraoral Tips	33

### ARTICULATING

AccuFilm®	5
AccuFilm® Arch	5

### TISSUE MANAGEMENT

Dryz® & Dryz® Blu	10
-------------------	----

### RELINES

MucoHard™	12
MucoSoft®	12

### IMPRESSION MATERIALS

Blu-Mousse®	31
Cinch®	30
Green-Mousse®	30
Mach-2® & Mach-SLO™	31
SHARP™	31
Triphasix™ Alginate	30

### ULTRASONIC SCALERS

Integra™	22
Periosonic® Irrigator	26
TurboPiezo™	26
TurboSensor®	23
TurboVue®	20

### CURING

Parkell Curing Light	36
----------------------	----

### ELECTROSURGERY

Sensimatic® 700SE	28
-------------------	----

### ENDODONTICS

Digitest II®	19
Foramatron®	18
Gentle Pulse™	19

### ULTRASONIC INSERTS

Burnett Power-Tip™	24
Comfort Grip™	25
GentleClean™	24
Magnetostrictive Inserts	24
TurboVue® Inserts	21

**DIRECTA** See pages 34 - 35  
[directadental.com](http://directadental.com) for select products.

\*Visit [Parkell.com](http://Parkell.com) for Terms of Sale, Policies, Warranty and Risk-Free Trial information. Prices stated herein apply only to purchases made directly from Parkell and only to purchases made in 2018.

## Receive 2 Hours of FREE CE Credit!

To take this CE FREE, go to [parkell.cdeworld.com](http://parkell.cdeworld.com) and enter promo code: **PK318**. Valid 4/1/18 - 5/15/18.

# How to Bond Zirconia: The APC Concept

By Markus B. Blatz, DMD, PhD / Marcela Alvarez, DDS, MSD / Kimiyo Sawyer, RDT / Marco Brindis, DDS

### ABSTRACT:

Zirconia has become one of the most popular materials in dentistry. New high-translucent zirconia ceramics have favorable optical properties and can be applied as monolithic full-contour restorations in various clinical indications for posterior and anterior teeth. However, having reliable cementation protocols is fundamental for clinical success of indirect ceramic dental restorations, including those made from zirconia materials. Resin bonding supports ceramic restorations and is necessary for onlays, laminate veneers, and resin-bonded fixed dental prostheses. The APC zirconia-bonding concept is based on decades of research on how to achieve high and long-term durable bond strengths to high-strength ceramics. It includes three practical steps: (A) air-particle abrasion, (P) zirconia primer, and (C) adhesive composite resin. This article discusses the history and development of high-translucent zirconia and explains the necessity for proper cementation. The rationale and science behind a simplified zirconia-bonding concept is explained and illustrated with a clinical case presentation. ■



### LEARNING OBJECTIVES:

After reading this article, the reader should be able to:

- Discuss the development of new high-translucent zirconia ceramics
- Explain the importance of resin bonding on the clinical success of ceramic restorations
- Describe the proper bonding protocols for zirconia restorations



**NEW!**

**parkell**  
**LC BASE**  
LIGHT CURE BASE RESTORATIVE

**HyperFIL®**  
LC Base®

**parkell**  
**LC BASE**  
LIGHT CURE BASE RESTORATIVE

- Resin-based, highly-flowable, bulk-fill base for use under anterior or posterior composite resins.
- Excellent flowability to conform to irregular deep cavity preps.
- Self-levels for optimal coverage.
- Minimal polymerization shrinkage for reliable marginal seals.
- Dentin shade nicely matches deep areas of most posterior teeth.

\$244
**NEW!** Parkell® LC Base
\$59.95

**Includes:** 15 unit-dose capsules.





# HYPERFIL®

Dual-Cure Restorative Composite

## A TRUSTED BULK-FILL COMPOSITE.

HyperFIL™ Dual-cure Restorative Composite is one of the ORIGINAL BULK-FILL materials. Parkell was one of the first manufacturers to have a product in this category (almost 10 years ago), long before the light-cured, 4 mm depth of cure materials came along. HyperFIL has ALWAYS been curable to ANY DEPTH, because dual-cure means it's light-cured AND self-cured. That's why you can rely on its performance, from the bottom of the preparation, ALL THE WAY TO THE TOP!



### FEATURES:

- A true bulk-fill restorative.
- Excellent esthetics & shade stability.
- Dual-Cure—no need for incremental layering and curing.
- Nanofilled for durability and optimized polishability.
- Low viscosity - flows slightly to conform to the cavity preparation.
- Available in 2 shades: Universal & Enamel.
- Radiopaque.
- Works perfectly with Brush&Bond® Universal (p6) & most other bonding agents.

HyperFIL® **\$82.09**

- S326** Universal Shade - A2/B2
- S323** Enamel Shade - A1/B1

**Includes:** 10ml syringe, mixing tips and intraoral tips (10ml cartridge dispensing gun required/not included).



## HYPERFIL® INTRO KIT

Stock No. **S321** **\$288.40**

- Includes:**
- (1) Enamel Shade Cartridge,
  - (1) Universal Shade Cartridge and
  - (1) 10ml Cartridge Dispensing Gun and mixing tips.



## AccuFilm® Arch

OCCLUSAL MARKING PAPER

**NEW!**



**S050** AccuFilm® Arch Marking Paper **\$23.51**

**Includes:** Box of 6 (12 sheets/booklet, 72 sheets ttl.).

- Uniform dark ink coating across the entire sheet gives sharp, easily-readable bite-marks on both arches.
- Sized to fit any arch, from pediatric patients to professional wrestlers!
- Red-Blue coating makes bite-mark recognition quick and easy.



### MORE ACCUFILM OPTIONS AVAILABLE!

#### AccuFilm® IV

**S020** Brush-On Marking liquid **\$54.62**

**Includes:** One bottle brush-on marking liquid and one bottle of solvent. Formulated in Germany.

#### AccuFilm® Marking Film Booklet

**S053** Double-Sided - Red/Black **\$23.51**

**Includes:** Box of 6 (12 sheets/booklet, 72 sheets ttl.).

#### AccuFilm® Marking Film Canisters

<b>S014</b>	Single-Sided - Black	<b>\$18.31</b>
<b>S015</b>	Single-Sided - Red	<b>\$18.31</b>
<b>S017</b>	Double-Sided - Red/Black	<b>\$23.51</b>
<b>S018</b>	Double-Sided - Black/Black	<b>\$23.51</b>
<b>S021</b>	Double-Sided - Red/Red	<b>\$23.51</b>

**Includes:** One canister of 280 pre-cut strips.

Single-Sided Film Thickness: 20 Microns  
Double-Sided Film Thickness: 30 Microns



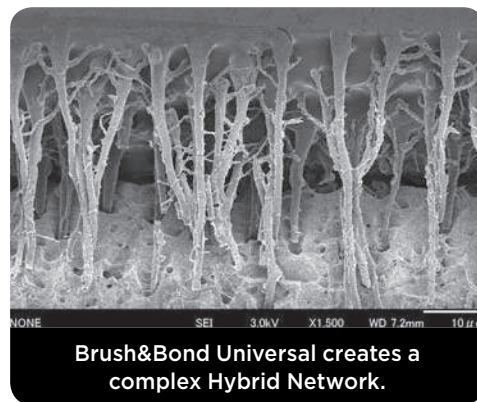




# STRONGER ADHESION and LONG-LASTING results.



- Superior physical properties compared to other “universal” systems.
- Significantly higher bond strengths to enamel and dentin.
- Low film thickness allows deep penetration and formation of complex Hybrid Network.
- **Kit includes Ea-Z-y Primer®** — Specifically formulated to enhance adhesive bonding to conventional porcelains and high-strength dental ceramics including Zirconia and Lithium Disilicate.



Brush&Bond Universal creates a complex Hybrid Network.



Brush&Bond® Mini/Endo Activator Brushes (bottom) feature a thinner, longer head than the standard brushes (top).

Stock No. **S240** **\$232.30**

**Includes:** One 3ml bottle of Brush&Bond Universal Liquid (S242) (etch/prime/bond), two 5ml bottles of Ea-Z-y Primer (“A” and “B” - S388) plus 100 Standard Activator Brushes.

## REFILLS

<b>S242</b>	<b>Brush&amp;Bond® Universal Liquid</b> (3ml bottle)	<b>\$104.99</b>
<b>S388</b>	<b>Ea-Z-y Primer Ceramic Priming Agent</b> Two 5ml bottles of Ea-Z-y Primer™ (“A” and “B”)	<b>\$97.77</b>
<b>S286</b>	<b>Brush&amp;Bond® Standard Activator Brushes</b> (100 pieces)	<b>\$72.06</b>
<b>S287</b>	<b>Brush&amp;Bond® Mini/Endo Activator Brushes</b> (100 pieces)	<b>\$72.06</b>

## ALSO AVAILABLE

<b>Original Brush&amp;Bond® Dentin/Enamel Composite Bonding System</b> Contains Brush&Bond liquid (3ml) plus 100 Activator Brushes:	<b>\$150.50</b>
<b>S284</b> with Standard Activator Brushes	
<b>S288</b> with Mini/Endo B&B Activator Brushes	
<b>S285</b> Original Brush&Bond® Dentin/Enamel Bonding Liquid (3ml bottle)	<b>\$87.76</b>

# When it comes to core composite materials, go with the **ABSOLUTE BEST!**



- Radiopaque.
- Densely filled (75%) with fluoride/barium glass.
- Strong, stable support for restorations -172 MPa flexural strength.
- Dual-cure: Self cures in 4 minutes or light cures in 40 seconds.
- Cures to a Barcol hardness of 72 - the typical hardness of dentin.
- Works beautifully with Brush&Bond® & Brush&Bond® UNIVERSAL.

Today's metal-free esthetic crowns demand a stiff supporting core. That's why when it comes to a core build-up material you want the best—the ABSOLUTE BEST. High-strength Absolute Dentin™ stacks great and preps like dentin right out of the cartridge. Plus, it's versatile. Not only can it be used to build-up material in the core of a broken down tooth, but also as a cement for endodontic posts.

## DURABILITY

When it comes to a composite material, the smallest amount of flex can cause a fragile ceramic crown to craze or fracture. That's why we created Absolute Dentin to cure to a Barcol hardness of 72, the typical hardness of dentin (hence the name). This core composite material displays a 172MPa flexural strength for strong, stable cores that last and resist flexing. This high level of durability also helps to reduce the chance that your bur will ditch when it goes from core to tooth and back again while finishing.



<b>Absolute Dentin® 50ml Kit</b>	<b>\$183.55</b>
<b>S300</b> Arctic White Shade	
<b>S301</b> Tooth Shade	
<b>S307</b> Blue Shade	

**Includes:** 50ml cartridge (110gm total) in split cartridge with mixing tips and intraoral tips.

<b>Absolute Dentin® 10ml Kit</b>	<b>\$85.64</b>
<b>S304</b> Arctic White Shade	
<b>S305</b> Tooth Shade	

**Includes:** Two 10ml cartridges (20ml-44gm total) of material of one shade, static mixing and intraoral tips.







NEW!

## parkell 37% PHOSPHORIC ACID ETCHING gel

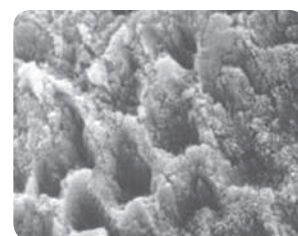
- Consistent etching for strong bonds.
- Easily visible during placement.
- 37% concentration (industry standard).
- Washes clean for predictable adhesion.
- Unique dispensing tip reaches difficult areas and provides total control.

Parkell's Etching gel is a 37% phosphoric acid suspension. It has a viscosity that makes it compatible with both the selective-etch and total-etch techniques. When used on enamel, Parkell's etching gel will increase the ability of bonding agents to achieve their maximum bond strength to the enamel.

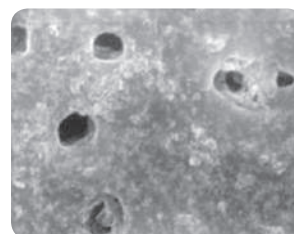
Parkell's Etching gel can be placed with precision when used with the enclosed dispensing tips. The blue color makes it easy to visualize on the tooth surface. The blue color also aids in confirming that the tooth has no residue remaining on it after the etch has been rinsed away.



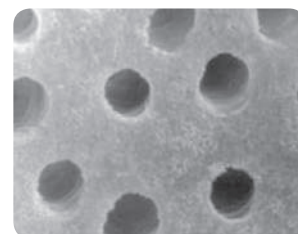
Enamel without treatment x 4000.



Enamel treated with Parkell Etching Gel x 4000.



Dentin without treatment x 4000.



Dentin treated with Parkell Etching Gel x 4000.

**S276** New! Parkell® Etching Gel **\$29.95**

**Includes:** Three 2ml syringes and 30 Applicator Tips

## parkell UNIVERSAL ADHESIVE

NEW!



Clinicians world-wide have looked to Parkell when in need of a reliable, effective bonding system. After all, we've had decades of success with products such as Touch&Bond®, Brush&Bond® and most recently, Brush&Bond® Universal.

Parkell's Universal Adhesive is a Multi-mode Adhesive formulated with a unique blend of **4-META** and **MDP** technologies. This proprietary formulation provides:

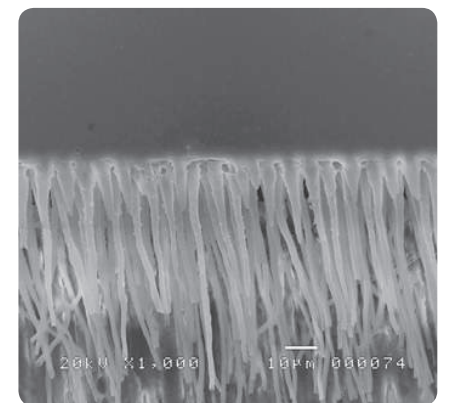
- Reliable micro-mechanical and chemical adhesion of dentin and enamel regardless of the etching technique desired.
- Compatibility with a variety of substrates-including metals, composites and ceramics.
- Desensitization of dentin due to excellent penetration of the resin into the tubules.
- An initial pH of 2.0 making it compatible with light-cured, self-cured and dual-cured resins.
- A low film thickness of 3 microns (particularly important when cementing crowns, bridges or other indirect restorations).

Enamel Bond Strength (MPa) <sup>Δ</sup>	Dentin Bond Strength (MPa) <sup>Δ</sup>
34.9	39.3

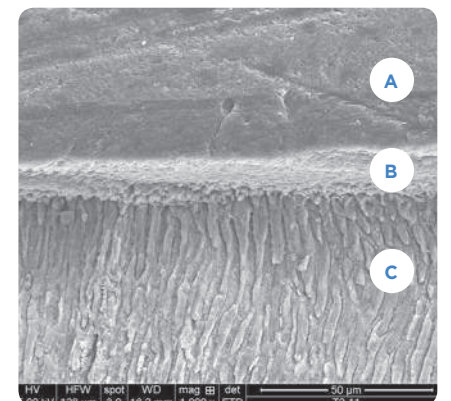
**S264** New! Parkell® Universal Adhesive Kit **\$130.00**

**Includes:** Universal Adhesive (5ml), brushes and mixing well.

SEMs provided by University of Utah



Substantial formation of resin tags in dentin and excellent coverage.



(A) Composite, (B) Cross-linking, (C) Enamel

MADE IN USA





Create a dry working environment  
**EVERY TIME!**

**Dryz**® & **Dryz**®  
**blu**

GINGIVAL HEMOSTATIC RETRACTION PASTE

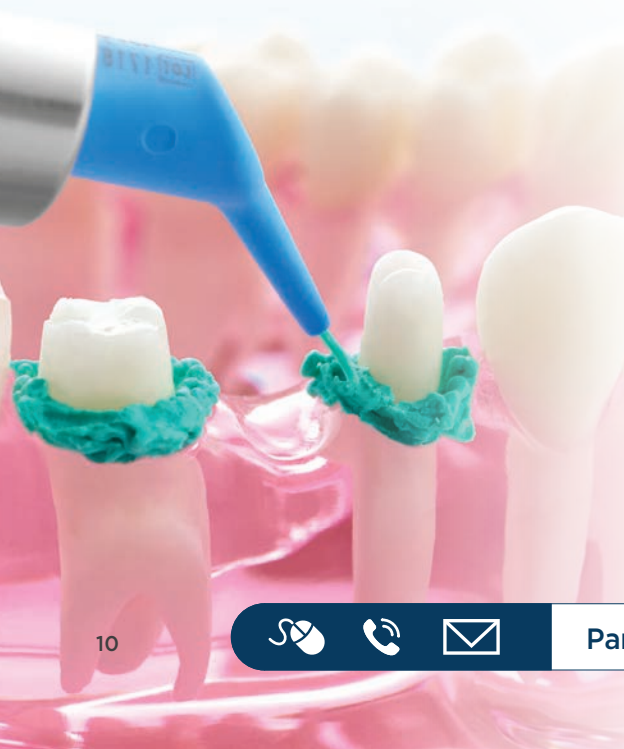
- New blue color makes it even easier to see the material.
- Stops gingival bleeding and seepage quickly.
- Aluminum Chloride acts fast and won't slough tissue like Ferric Sulfates.
- New creamy consistency adapts well and washes off clean.
- Single dose dispenser eliminates waste and keeps asepsis.

Dryz® is terrific for use alone or in conjunction with retraction cord or compression caps. Dryz is fast-acting in stopping gingival bleeding and seepage from crevicular fluid that may interfere with impression making.

The light green color of Dryz contrasts nicely with gingiva, blood and tooth structure, making it easy to detect where the material has been placed. Dryz is quickly removed with an air/water syringe and leaves no residue to interfere with impressions or seating of restorations.



Original Dryz® available in Syringes and Unit Dose Capsules



Dryz goes into the gingival sulcus, making sure to fully contact all of the soft tissue.



Rinse Dryz using copious amounts of water to reveal a clean, retracted gingival sulcus and margin of the prepared tooth.

Dr. Henry Long, DMD



**Watch Online!** See Dryz in action on Parkell.com or our YouTube channel parkellinc.



<b>S186</b>	<b>NEW! Dryz Blu Introductory Kit</b> 30 unit dose capsules ( <del>\$187 \$95.99</del> ) & Dispensing Gun ( <del>\$189 \$55.00</del> )	<b>\$125.00</b>
<b>S180</b>	<b>Dryz - 7 Syringes / 15 applicator tips</b>	<b>\$68.55</b>
<b>S182</b>	<b>Dryz Value Pack</b> 25 Syringes / 55 applicator tips	<b>\$209.09</b>
<b>S183</b>	<b>Dryz Unit Dose</b> 30 unit dose capsules	<b>\$89.15</b>





For Durable, Convenient Chairside  
**HARD RELINES**

# MucoHard™

- Super-fast and easy to use.
- Eliminates powder/liquid mixing.
- Non-runny, thixotropic consistency.
- Auto-polymerizing resin formula sets without a curing light.
- Ideal for small jobs like attachment pickups as well as full relines.
- Pink polymer blends beautifully with most denture base shades.
- Works with the same 50ml impression material dispensing gun.



## REFILLS



<b>S485</b>	<b>MucoHard Bonding Liner</b> 15ml, with 6 brushes & 6 pipettes	<b>\$29.43</b>
<b>S486</b>	<b>MucoHard Reline Resin</b> 50ml Cartridge and mixing tips	<b>\$52.48</b>

<b>Stock No.</b>	<b>S487</b>	<b>\$76.55</b>
------------------	-------------	----------------

**Includes:** One 50ml cartridge of MucoHard auto-polymerizing resin, 15ml MucoHard bonding liner, mixing tips, brushes and pipettes.



For Comfortable, Long-lasting  
Chairside **SOFT RELINES**

# MucoSoft®

- Creates instant comfort for the patient.
- Non-runny, thixotropic consistency.
- Quick and easy soft silicone relines with no heat or bad taste.
- Translucent pink color blends beautifully with most denture base shades.
- Hydrophobic formula reduces water absorption, discoloration, odor or stiffening with age.
- Uses standard 50ml auto-mixing gun which eliminates messy powder/liquid mixing.
- Special primer tenaciously grafts durable silicone to the denture base, to resist peeling, leaking and tearing.



## REFILLS



<b>S492S</b>	<b>MucoSoft Resilient Reline Silicone 50ml</b> Refill Cartridge and mixing tips	<b>\$111.38</b>
<b>S493</b>	<b>MucoSoft A &amp; B Glaze Refill, 12ml total</b>	<b>\$41.82</b>
<b>S494</b>	<b>MucoSoft Bonding Liner Adhesive Refill, 15ml</b>	<b>\$55.39</b>

<b>Stock No.</b>	<b>S491S</b>	<b>\$175.03</b>
------------------	--------------	-----------------

**Includes:** One 50ml cartridge of MucoSoft® Reline Silicone, 15ml MucoSoft® Bonding Liner Adhesive, 12ml Glaze (2 components A&B), mixing tips, brushes & pipettes.



# SEcure®

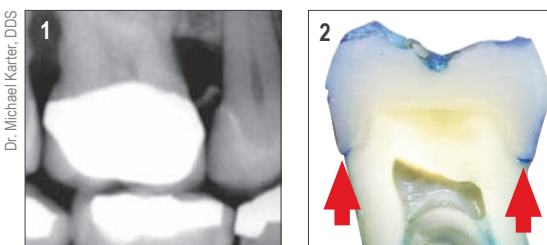
A Revolutionary 4-Meta Adhesive Resin Cement System That Delivers Outstanding Bond Strength and Advanced Sealing Properties.



- 4-META chemistry.
- No separate etching when using Parkell's unique, low viscosity, self-etch primer or Brush&Bond®.
- Seals and protects the tooth from marginal leakage.
- Dual-cure will cure in areas where a curing light can't reach.
- Virtually no post-op sensitivity.

1. SEcure's radiopacity enables identification of excess cement that extrudes subgingivally during crown cementation.
2. SEcure virtually shuts down microleakage, allowing for stain-free margins!

Dr. Michael Karler, DDS



## REFILLS

<b>SEcure Dual-Cure Resin Cement</b> Includes one (9g) syringe, plus 10 mixing tips.	<b>\$140.56</b>
<b>S272</b> Translucent Shade	
<b>S273</b> White Opaque Shade	
<b>S274</b> Dentin Shade	
<b>S271</b> SEcure Self-etch Primer Includes one bottle (3ml).	<b>\$81.45</b>
<b>S275</b> 30 Mixing Tips	<b>\$30.09</b>

SEcure® is one of the most effective resin cement systems available today, providing **stronger, more reliable bonds to cut enamel and dentin** than other leading brands. How? By way of its penetration enhancing molecule— 4-META. This unique monomer quickly and efficiently permeates cut enamel and dentin to form a hybrid layer between the tooth and adhesive resin. SEcure's biocompatibility not only creates a dependable bond between prosthesis and tooth surface, it also occludes tubules to guard against external stimuli, bacteria and other sensitivity-causing agents. It virtually shuts down microleakage, too, for stain-free margins.

<b>Stock No.</b>	<b>S270</b>	<b>\$219.17</b>
------------------	-------------	-----------------

**Includes:** Self-Etch Primer (3ml), syringe of Translucent Shade Resin Cement (9g), brushes, mixing tips and mixing well.



**Try us in your office today!** 100% Money-Back Guarantee.  
\*Visit Parkell.com for Terms of Sale, Policies, Warranty and Risk-Free Trial information.

# C&B-METABOND® Quick!

## Adhesive Luting Cement



### RECOMMENDED USES:

- Cement crowns on short or overly tapered abutments.
- Re-cement bridges or posts that repeatedly loosen due to compromised retention or patient habits.
- Perform fast, chairside repairs such as mending broken abutments, repairing porcelain fractures, splinting periodontally-compromised teeth, adding teeth to removable prostheses, or bonding directly to composite or acrylic-based prostheses.
- Place direct pulp-caps, repair root perforations in “hopeless cases” and so much more...

Stock No. **S380** \$430.26

### KIT INCLUDES:

- ✓ Quick Base and Catalyst
- ✓ Universal Gel Dentin Activator
- ✓ Liquid Dentin Activator
- ✓ Enamel Gel Etchant
- ✓ Ceramic mixing dish with temperature strip
- ✓ Radiopaque and Clear shade L-powders



**Watch Online!** Dr. Richard Goldman, DDS, FAGD demonstrates the set-up, proper bulk-mixing technique and clean-up of C&B-Metabond® when inserting a full ceramic crown. See it now on the C&B-Metabond page at parkell.com.

### REFILLS



<b>S371</b>	“C” Universal TBB Catalyst, 0.7ml	\$202.98
<b>S398</b>	“B” Quick Base for C&B-Metabond®, 10ml	\$83.48
<b>S395</b>	Enamel Etchant Gel for C&B-Metabond®, 5ml	\$26.31
<b>S396</b>	Radiopaque L-Powder for C&B-Metabond®, 5gm	\$51.36
<b>S399</b>	Clear L-Powder for C&B-Metabond®, 3gm	\$37.37
<b>S394</b>	Universal Dentin Activator Gel (“A” Activator), 5ml	\$26.57
<b>S393</b>	Universal Dentin Activator Liquid, 6ml	\$21.16
<b>S387</b>	Ceramic Mixing Dish with Temperature Strip	\$44.94
<b>S379</b>	Adjustable Precision Applicators, 200 pieces	\$28.00
<b>S377</b>	Disposable Brush Tips, 100 pieces	\$12.95
<b>S413</b>	MTL-V Metal Primer™, 3ml bottle (For priming noble and precious alloys without tin plating.)	\$71.76

- Think of it as the effective “anti-bonding” agent.
- Blue color lets you see what you covered.
- Water soluble and washable for quick and easy clean up.

Stock No. **S385** \$43.73



**BluSep™**  
SEPARATING FILM

# RETRIEVE™ DC

## Dual-Cure Resin-Based Implant Cement

**NEW!**

- Strong Adhesion to Implants Composed of Metal Alloys and Ceramics
- Increased Radiopacity: 300% Aluminum-Improvement over original Retrieve and other Implant Cements.

Parkell has introduced NEW Retrieve™ DC Resin-Based Implant Cement. With a significant increase in radiopacity and a dual cure capability, this implant cement provides long term, semi-permanent adherence to all implant prostheses whether they are metal or ceramic and without the need for a bonding agent. Not only does Retrieve DC guarantee polymerization in areas where a curing light cannot access, it boasts a 300% Aluminum radiopacity - so that any residual cement may be detected around implants and restorations.



### DUAL-CURE CAPABILITY

- Light curing: 20 Seconds
- Working Time: 2 Minutes
- Gel Stage for Easy Clean-up: 2-3 Minutes
- Self-Cure Setting Time: 5 Minutes

Stock No. **S251** \$69.95



Includes: 5ml dual-chamber cartridge and 10 Mixing Tips

CE 0120

# ETC.™ EASY TEMPORARY CEMENT

- Strong adhesion to temporary prostheses.
- Low viscosity allows complete seating of temporaries.
- Translucent shade blends well with crown and tooth margins.
- Automix syringe and dual-cure capabilities reduce chairside time.
- Eugenol-free.



Stock No. **S255** \$48.05



Includes: 5ml automix syringe and 10 mixing tips.





# AMALGAMBOND<sup>®</sup> + PLUS

## NOT JUST FOR AMALGAM...

composite, metals, porcelains,  
lithium disilicate and more!



- Zero post-op sensitivity.
- No varnish or liners needed.
- Strong, self-cure bonds without the need for a curing light.
- Works equally well with composites, alloys and ceramics.
- Minimally invasive preps eliminate the need for pin retention.
- Dramatically reduces chances of marginal leakage.

### RECOMMENDED USES:

Ideal for bonding to enamel, dentin, cementum as well as restorative materials such as composites, metals, porcelains, pressed ceramics, lithium disilicate and amalgam.

Also use as an effective desensitizer due to its proven 4-META chemistry. Amalgambond may be used in the presence of small amounts of moisture, as it contains hydrophilic monomers.



### Refills:

<b>S371</b> "C" Universal TBB Catalyst, 0.7ml	<b>\$202.98</b>
<b>S372</b> "B" Base, 5ml	<b>\$57.12</b>
<b>S394</b> Universal Dentin Activator Gel, 5ml	<b>\$26.57</b>
<b>S393</b> Universal Dentin Activator Liquid, 6ml	<b>\$21.16</b>
<b>S374</b> "AA" (Adhesive Agent) Primer, 8ml	<b>\$7.14</b>
<b>S376</b> High-Performance Additive (HPA powder) for large, multi-surface restorations, 2gms	<b>\$28.51</b>
<b>S379</b> Adjustable Precision Applicators, 200 pieces	<b>\$28.00</b>
<b>S377</b> Disposable Brush Tips, 100 pieces	<b>\$12.95</b>
<b>S375</b> Amalgambond <sup>®</sup> PLUS Accessory Kit contains 1 brush handle, 100 disposable brush tips, 1 spatula, 3 measuring spoons & 2 mixing wells.	<b>\$24.12</b>

Stock No. **S370** **\$272.34**

**Includes:** Dentin/enamel gel activator, adhesive agent, Amalgambond base, Amalgambond catalyst, high-performance additive powder, plus accessories.

# PAIN-FREE<sup>™</sup> gel

NO MIX DESENSITIZER

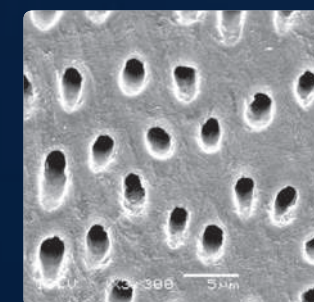
NEW!

## Relief Within Seconds.

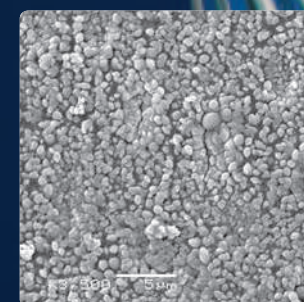
- Gel provides more precise, pinpoint placement of the medication, providing desensitizing results exactly where you need them.
- Easy, no mess dispensing.
- Unique Tripolymer formula for effective, long term results.

Stock No. **S382** **\$148.95**

**Includes:** Three 3ml syringes and 30 Needle Nose Intraoral Applicator Tips



Enlarged dentin tubules



Tooth surface after Gel Desensitizer application



## MetaSEAL<sup>®</sup>

4-Meta-based self-etch endodontic sealer

- High performance endodontic sealer.
- Self-etch formula hybridizes the canal walls to prevent leakage.
- Dual-cure (sets with or without a curing light).
- Bonds to common gutta percha or Resilon<sup>®</sup>.
- MetaSEAL is compatible with any cold obturation technique.

Stock No. **S160** **\$202.98**

**Includes:** MetaSEAL Liquid (4.5ml), powder (5gm), mixing pad, measuring scoop and plastic spatulas.





# THE NEXT GENERATION OF PRECISION ENDODONTICS

## The Foramatron® Apex Locator



- Precisely pinpoints the apical constriction using high and low frequency bands.
- LED illuminated display for easy viewing.
- Four distinct audio signals reinforce the indicator lights.
- Reliable results even in the presence of all types of fluids.
- Uses an easily-replaceable 9-Volt battery.
- Includes detachable autoclavable cables.
- Ergonomic, aseptic design.

The Foramatron uses high and low frequency bands to accurately pinpoint the apical constriction even in canals filled with blood, sodium hypochlorite, anesthetic solution, saliva, exudate, EDTA, RC Prep® and more.

When the tip of your file approaches the foramen, the digital display begins tracking the progress down the canal with green lights and distinct audible sounds. As you get closer to the apical constriction, the lights switch to an orange color indicating "caution". The "beep" changes making the distinction clear. When the tracking light turns red, another distinct audible sound will occur. This means STOP! You've reached the foramen. If you happen to ignore the readout and continue down the canal, the audible sound will be

continuous and the lights will turn orange indicating that you've penetrated the apex. The volume of the device may be adjusted accordingly, if you decide just to use the visual display or vice versa.

And if this isn't enough to entice you, the Foramatron also self-calibrates for each patient and each tooth. Its efficient circuitry and low-current signal won't cause patient discomfort and won't drain the battery, which, by the way, is a simple, easy-to-replace 9-volt that you can purchase almost anywhere. The unit warns you when the battery is low and also puts itself into a sleep mode when not used for about 20 minutes.



Stock No. **D645** \$717.10



Includes: Reamer Holder, Cables, Touch Probe, 2 Lip Grounds, Test Plug and 9V Battery.



# Digitest II®

PULP VITALITY TESTER



- Automatic one-button operation.
- Three rates of stimulus increase – slow, medium and fast.
- Unit remembers the previous rate of speed programmed.
- Micro-processor performs a self-test assuring proper function of the unit every time.
- Runs on easily replaceable 9-V alkaline battery.
- Includes four autoclavable probe tips; Short, Long, Precision Labial, Precision Lingual.



The durable, shaped case makes the Digitest II® comfortable to handle, as well as being easy to wipe down for disinfecting.

When the start button is pressed, the device's microprocessor produces a gentle, pulsed waveform that automatically increases in strength, repeating several times per second. This progressive stimulus produces a pulpal response well below the patient's pain threshold. The result is an accurate reading you can rely on, while keeping the patient comfortable.

The same button that activates the device allows the user to program the unit's functions. To select the rate of increase for the stimulus, simply apply two quick presses. In addition, the microprocessor performs a self-test every time the unit is turned on to assure that the entire electronic system is functioning properly.

The unit also shuts itself off after testing to preserve battery life. The Digitest II comes with a standard, 9-Volt Alkaline battery that may be easily replaced right in the dental office.

Stock No. **D640** \$472.68



Includes: Digital Pulp Vitality Tester, 4 autoclavable probe tips, ground wire, clip, 9-volt battery and durable case.

## ((GentlePulse™))

- Analog dial controls strength of electrical signal to the tooth.
- Unit comes with 2 autoclavable probe tips.
- Runs on easily replaceable 9-V alkaline battery.

Stock No. **D624MS** \$258.53



Includes: Analog Pulp Vitality Tester, 2 autoclavable probe tips, ground wire, clip and a 9-volt battery.



Try us in your office today! 100% Money-Back Guarantee.

\*Visit Parkell.com for Terms of Sale, Policies, Warranty and Risk-Free Trial information.



# TurboVue

ILLUMINATED ULTRASONIC SCALER

- 30K Inserts transmit light from the handpiece.
- Auto-tuning technology.
- Dramatically expanded low-power range improves comfort.
- Power-boosting Turbo feature when more power is needed.
- External water filter prevents clogs and drips.

This uniquely engineered device provides excellent visibility when scaling all areas of the oral cavity. The TurboVue features a light source built into the handpiece allowing a significant amount of light to emit through the 30K, light-transmitting ultrasonic inserts.

Whether it's the distal of a second maxillary or mandibular molar, a furcation or a deep lingual pocket you're trying to access, the intense light of the TurboVue will illuminate even the toughest corners ensuring that you won't miss anything. Plus, the light saves on the operator's eyes. No more squinting or messing with the overhead lamp or loupes.

The TurboVue also features auto-tuning technology, a dramatically expanded low-power range that improves comfort during debridement, and a power-boosting Turbo feature for an increase in scaling power when needed.

### Specifications:

- Overall size: 1" H x 5½" W x 7½" D (41mm x 140mm x 190mm)
- 110V (220V/230V also available)
- Weight: 2.70 lbs (1.22kilograms)
- Length of Handpiece cable: 7' (215cm)
- Length of Foot Pedal Cable: 7' (215cm)
- Length of Power Cord: 110V—12' 6" (380cm); 220/230V—7' 6" (230cm)
- Length of Water Supply Hose: 7' 6" (230cm)
- Certifications: All electrical devices have been certified to: IEC 60601-1, IEC 60601-1-2 and CAN/CSA C22.2 and are TUV listed.



**D570 TurboVue Illuminated Scaler \$1,222.10**

**Includes:** Scaler with attached handpiece, foot controller and water line, In-line water filter with spare disk and water connection with quick disconnect. Transformer with cable. TurboVue Insert required for illumination.



# TurboVue

## LIGHT-TRANSMITTING INSERTS

TurboVue® Scaler required for Illumination.



**NEW!** Triple-Bend with Precision Flow  
Stock No. **DLH30Tri-PF**  
**\$199.00**

**NEW!** Triple-Bend  
Stock No. **DLH30Tri**  
**\$184.37**

Burnett Power-Tip V  
Stock No. **DLH30T**  
**\$184.37**

Universal Tip V  
Stock No. **DLH30U**  
**\$184.37**

Straight Perio Tip V  
Stock No. **DLH30P**  
**\$184.37**

**New!**  
**Precision Flow Delivery System**



# INTEGRA™

## A FULLY INTEGRATED SYSTEM

### ULTRASONIC SCALER

- External AND internal water sources!
- Easy-to-clean touch panel holds up to most standard disinfectants.
- Digital touch control of power and water flow, or use the foot pedal for hands-free power adjustment.
- Easily-removed dual reservoirs give you a choice of irrigants.
- Automatically adjusts operating frequency to match Parkell 25KHz or 30KHz inserts.
- Autoclavable handpiece sheaths.



### Are you doing hygiene “On the Move”?

If so, then you need the NEW Integra fully integrated ultrasonic scaler! Even if you aren't doing mobile hygiene or moving from one operatory to the next using one scaler, the Integra integrated scaler is the BEST choice for all of your needs.

The NEW Integra unit features a stable reservoir bottle design allowing the operator to gently move the scaler from operatory to operatory (on a mobile cart) without spilling the liquids from the bottles. Of course, we don't advise that the unit be tipped or shaken, but if you need to move the unit, the secure bottle system will prevent “sloshing” of the liquids into the bottle cavity and pooling there.

As always, the Integra offers the option of connecting to an operatory water source and/or using the reservoir bottles for irrigating medicaments or just plain water (if you are taking your scaler to nursing homes, hospitals or taking your National Boards where there isn't the luxury of connecting to an outside water source).

The Integra Magnetostrictive Ultrasonic Scaler with the NEW stabilized bottles is a must for clinicians on the move! Order yours now!

### New stable reservoir bottle design!



When you adjust the power using either the **touch panel** or the foot pedal, color-coded lights indicate the operating power:

- Blue: Comfortable low-power debridement for maintenance scaling.
- Yellow: Conventional scaling.
- Orange: Extreme scaling for tenacious calculus

**Stock No. D680 \$1,545.30**

**Includes:** Scaler, power supply, foot pedal, two irrigant reservoirs and two autoclavable handpiece sheaths. Accepts any 25KHz or 30KHz compatible insert (not included).

**5 YEAR WARRANTY**

**MADE IN USA**

#### Integra Specifications:

- Overall size: 5”W x 6”H x 11 1/2”D (130mm x 150mm x 290mm)
- 220/230V (110V also available)
- Weight: 110V—4lbs 2oz (1.87 kilograms); 220/230V—4lbs (1.81 kilograms)
- Length of Handpiece cable: 6’ 9” (205cm)

- Length of Foot Pedal Cable: 7’ 6” (230cm)
- Length of Power Cord: 110V—12’ 6” (380cm); 220/230V—7’ 6” (230cm)
- Length of Water Supply Hose: 7’ (215cm)
- Certifications: All electrical devices have been certified to: IEC 60601-1, IEC 60601-1-2 and CAN/CSA C22.2 and are TUV listed.



## The Hardest Working and Most Practical Ultrasonic Scaler

# TurboSENSOR™

Ultrasonic Scaler



- Powers any 25KHz or 30KHz Parkell insert
- Automatically switches frequency to match insert
- External water filter prevents clogs and drips
- Autoclavable handpiece sheaths
- Foot-controlled Turbo power boost
- Expanded low-power “Perio” mode



Convenience and control with the TurboSensor's foot pedal.



The preinstalled in-line water filter not only filters water, but also helps to prevent clogs and drips

Stock No: **D419**

Parkell's popular TurboSENSOR™ Ultrasonic Scaler combines true versatility with intuitive operation. Its smart-circuitry senses whether you've inserted a 25KHz or 30KHz tip and automatically switches operating frequency to match the insert in the handpiece.

The TurboSENSOR features a preinstalled water filter to help reduce clogs and drips—two of the most common reasons for needing service. The unit also comes with two autoclavable handpiece sheaths that are made of high-temperature resin, so you can continue working while one is being sterilized.



The male quick-connect coupler at the end of the water hose allows you to easily connect the unit to your water source.



Includes two autoclavable handpiece sheaths, made of high-temperature resin to last and keep asepsis

Stock No: **D576**

**Stock No. D560 \$861.00**

**Includes:** Scaler, two autoclavable handpiece sheaths, in-line water filter with spare disk, quick-disconnect water connection and foot controller.

**5 YEAR WARRANTY**

**MADE IN USA**

#### TurboSensor Specifications:

- Overall size: 1”H x 5 1/2”W x 7 1/2”D (41mm x 140mm x 190mm)
- 110V (220V/230V also available)
- Weight: 2.70 lbs (1.22kilograms)
- Length of Handpiece cable: 7’ (215cm)

- Length of Foot Pedal Cable: 7’ (215cm)
- Length of Power Cord: 110V—12’ 6” (380cm); 220/230V—7’ 6” (230cm)
- Length of Water Supply Hose: 7’ 6” (230cm)
- Certifications: All electrical devices have been certified to: IEC 60601-1, IEC 60601-1-2 and CAN/CSA C22.2 and are TUV listed.

**45 DAY RISK-FREE TRIAL**

**Try us in your office today!** 100% Money-Back Guarantee.

\*Visit Parkell.com for Terms of Sale, Policies, Warranty and Risk-Free Trial information.



# BURNETT POWER-TIP™

## STAINLESS & SOFT-GRIP INSERTS

- 70% More power—much greater power than a Universal or Perio insert.
- Longer, slim design reaches into narrow spaces.
- Robust enough to smooth plaque-trapping overhangs and remove proximal accretions and stubborn cements.
- Soft-grip provides more comfort and lessens finger vibration.

The **Burnett Power-Tip™ Stainless** is our toughest insert on hard calculus. Its mass is greater along the working portion of the tip, so it has more momentum when it hits the calculus and transfers about 70% more energy. Nothing works better than the Burnett when you are tackling flinty root calculus, interproximal accretions or amalgam overhangs!



Stock No	Description	
<b>DTI25</b>	25K Burnett Power-Tip™	<b>\$173.40</b>
<b>DTI30</b>	30K Burnett Power-Tip™	<b>\$173.40</b>
<b>DSG30T</b>	30K Burnett Soft-Grip Insert	<b>\$173.40</b>



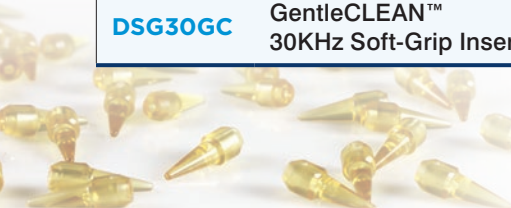
## GENTLECLEAN™

### SPECIALTY INSERTS

- Removes biofilm plaque and soft calculus from metal and teeth.
- Use on implants and orthodontic brackets.
- Will not scratch Titanium, Zirconia, or Teeth.
- Ideal for use on children or on hypersensitive patients.
- Won't damage restoration margins.

Stock No.	Description	
<b>DSG30GC</b>	GentleCLEAN™ 30KHz Soft-Grip Insert	<b>\$202.00</b>

**Includes:**  
50 disposable tips  
and Tip Wrench.



## STAINLESS STEEL GRIP INSERTS



**Universal: Internal Water**  
**DUI25** 25KHz,  
**DUI30** 30KHz  
**\$137.10**



**Straight Perio: Internal Water**  
**DPI25** 25KHz,  
**DPI30** 30KHz  
**\$143.70**



**Beaver Tail**  
**DBI25** 25KHz,  
**DBI30** 30KHz  
**\$140.96**



**Curved Perio: Internal Water**  
Right: **DPR25** 25KHz, **DPR30** 30KHz  
Left: **DPL25** 25KHz, **DPL30** 30KHz  
**\$166.86**

# ComfortGrip™

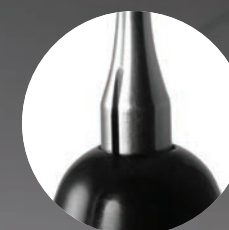
## ULTRASONIC INSERTS

**NEW!**

- Well balanced for operator comfort.
- Ergonomic grip design.
- Two types of water delivery.
- Hand assembled & tested.
- Sturdy & Durable



Precision Flow



Standard Flow



**New! 30K Triple Bend  
Comfort Grip Insert  
with Precision Flow**  
Stock No. **DCG30Tri-PF** **\$199.00**

*Standard Flow*  
Stock No. **DCG30Tri** **\$180.00**



**New! 30K Universal  
Comfort Grip Insert  
with Precision Flow**  
Stock No. **DCG30Uni-PF** **\$199.00**

*Standard Flow*  
Stock No. **DCG30Uni** **\$180.00**



**New! 30K Universal Slim  
Comfort Grip Insert  
with Precision Flow**  
Stock No. **DCG30Slim-PF** **\$199.00**

*Standard Flow*  
Stock No. **DCG30Slim** **\$180.00**





Small footprint.  
**BIG POWER!**

# TURBO PIEZO™ Ultrasonic Scaler



**Includes 3 Inserts!**  
Easy to handle and very durable.

- Compact size. Quiet operation.
- Lightweight for easy handling and portability.
- Foot-controlled Turbo power boost.
- Expanded low-power “Perio” mode.
- External water filter (prevents clogs and drips).
- 110V (220V/230V also available).



Stock No. **D690** \$1,403.90



**Includes:** Scaler, handpiece, Burnett Power-Tip, Perio and Universal Straight Inserts, tip wrench, foot pedal, in-line water filter with spare disk, and quick-connect water connection.

**TurboPIEZO Specifications:**

- Overall size: 1 "H x 5 1/2"W x 7 1/2"D (41mm x 140mm x 190mm)
- 110V (220V/230V also available)
- Weight: 2.70 lbs (1.22kilograms)
- Length of Handpiece cable: 8' (243cm)

- Length of Foot Pedal Cable: 7' (215cm)
- Length of Power Cord: 110V—12' 6" (380cm); 220/230V—7' 6" (230cm)
- Length of Water Supply Hose: 7' 6" (230cm)
- Certifications: All electrical devices have been certified to: IEC 60601-1, IEC 60601-1-2 and CAN/CSA C22.2 and are TUV listed.



## PERIOSONIC® Multi-Fluid Irrigator

- Flood deep pockets with your choice of irrigants at the same time you ultrasonically debride the root.
- Compact footprint (4"w x 7"l x 9"h) fits beside or on top of your ultrasonic scaler.
- Basic Unit is designed for practices that prefer an isolated water source for scaling.
- Model “W” unit gives you choice of using 3 fluids. Either of the fluids in the reservoirs or operatory water.)
- Easy connection to existing air and water lines.

**D583 Periosonic Basic Unit \$292.00**  
**D584 Periosonic Model W \$345.00**

**Includes:** Unit and four reservoir bottles.



## EPIC™-TMPT Light-Cure Composite Resin

- Flexes with the tooth to reduce stress at the margin.
- Reduces chances of leakage, sensitivity, staining, and pop-out.
- More resilient than traditional microfills—much more resilient than hybrids.
- Reactive organic filler chemically bonds to the matrix.
- Polishes beautifully.



Ross W. Nash, DDS

### The PERFECT COMPOSITE for Class V Restorations!

EPIC™-TMPT Composite Syringes, (3gm)		EPIC™-TMPT Composite Unit Dose Capsules, (15ea-.25gm capsules, 3.75gm total - fits the Centrix® gun)		EPIC™-AP All-Purpose Micro-Hybrid Syringes, (anterior/posterior) 3gm	
<b>\$60.62</b>		<b>\$83.12</b>		<b>\$58.85</b>	
S356 A1 S361 A2 S362 A3 S363 A3.5 S357 A4 S355 B1 S364 B2 S365 B3 S358 B4	S366 C2 S367 C3 S368 C4 S369 D4 S360 Universal-shade Between B2&B3 S359 Incisal	S356UD A1 S361UD A2 S362UD A3 S363UD A3.5 S357UD A4 S364UD B2 S365UD B3	S366UD C2 S360UD Universal-shade Between B2&B3 S359UD Incisal	S310 A2 S311 A3 S314 B2 S316 C2 S317 C3	



## ALL-CURE DuraFINISH™ COMPOSITE GLAZE



- Provides a dazzling, stain-resistant surface for all temporaries and composite restorations.
- All-Cure polymerizes with ANY light - LED, halogen, PAC or laser.
- Resists surface abrasion significantly better than traditional glazes.
- Requires no polishing.
- Nanofilled for long-lasting, superior durability.

Stock No. **S296** \$75.33

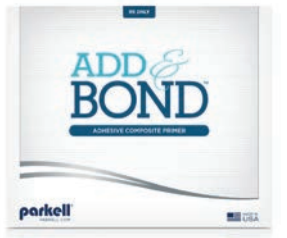


**Includes:** 5ml adhesive glaze, brushes and mixing well.

**ALSO AVAILABLE:** S295 Original DuraFinish

Halogen light cure only.

## ADD & BOND™ ADHESIVE COMPOSITE PRIMER



- Quick repair of fractured composite.
- Improves the adhesion of resin or fiberglass posts.
- Repair or re-marginate a bis-acrylic temporary.
- Provides a thin, flexible—yet strong—layer between existing and new composite.

Stock No. **S260** \$80.53



**Includes:** 5ml bottle of adhesive primer, disposable brushes and a mixing dish.



**Try us in your office today!** 100% Money-Back Guarantee.  
\*Visit Parkell.com for Terms of Sale, Policies, Warranty and Risk-Free Trial information.



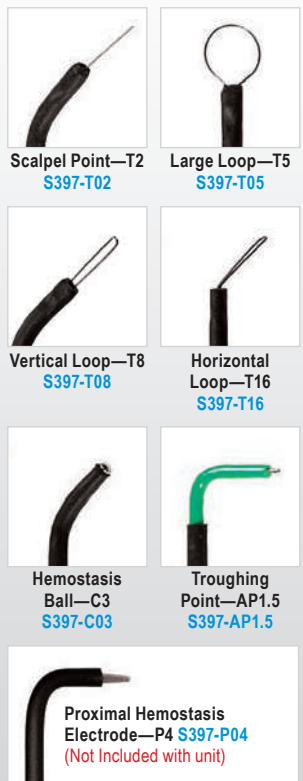
# SENSIMATIC® 700SE ELECTROSURGE

## EASY TISSUE MANAGEMENT



- Is ready the minute you turn it on. The unit is 100% solid state, so there's no waiting for a "warm up" before it's ready to work.
- Features a safety Sentry Circuit that compares the output of the electrode to the control setting. If the output differs from the setting, the circuit safely deactivates the unit.
- Has 10 power settings and three modes of operation: CUT, CUT/COAG, and COAG to cover everything from crown and bridge procedures to fulguration.
- Has a radio frequency output that meets ANSI specifications.
- Has low-impedance circuitry to adjust power when cutting depth varies. Cutting efficiency remains constant even when an electrode penetrates into highly vascularized tissue.
- Features an operation light and audible tone to let you know when the unit is in use.

### INCLUDES SIX ELECTRODES



Replacement Electrodes  
\$23.23 ea.

Electrodes not covered under warranty.

The Sensimatic 700SE Electrosurge is ETL listed and conforms to IEC 60601-1, 60601-1-2, 60601-2-2 and TUV listed. Parkell's quality system is certified to ISO13485. Certified to CAN/CSA C22.2 No. 601.1. The device is CE marked—certified to European Medical Device Directive (93/42/EEC).

Stock No. **D700SE** \$1,205.10



**Includes:** Electrosurge unit, six electrodes, foot switch, handpiece and cable, indifferent plate and cable and operator's manual.



Replacement Parts for Original Sensimatic 700SE

<b>D634</b>	Indifferent Plate	\$46.71
<b>D601</b>	Indifferent Plate & Red Cable	\$78.22
<b>D633</b>	Black Handpiece/Cable	\$94.30



Replacement Parts for New Sensimatic 700SE

<b>D634</b>	Indifferent Plate	\$46.71
<b>D703</b>	Indifferent Plate & Red Cable	\$78.22
<b>D702</b>	Black Handpiece/Cable	\$94.30

**PLEASE BE AWARE:** If you need to order a replacement Indifferent plate or handpiece for your Sensimatic 700SE, the updated components **WILL NOT FIT** an original Sensimatic 700SE. New modified Sensimatic 700SE (110 volt) units have serial numbers beginning with 90000. Any 110 volt units (for USA) that have serial numbers below 90000 are of the original style. For customers whom have Sensimatic 700SE 230 volt units, the modified units begin with serial numbers 80000. If you have any questions or concerns when ordering parts for your Sensimatic 700SE units, please give us a call.

# SNAP®

SELF-CURE PROVISIONAL RESIN



- Extraordinary marginal accuracy.
- Dramatically reduces polymerization shrinkage.
- Delivers a better fit than methyl methacrylate-based materials.
- Features a true doughy stage.
- Lower heat release.
- Choice of extended shades.
- Exceptional color stability.



**S424 Snap® Starter Kit \$86.91**

**Kit Includes:** 1 bottle of liquid monomer (4oz.) and 4 popular shades of powder: (62/A2, 65/A3/D3, 69/C2/D4, 77/B3/B4).

#### Refills:

Shade (Vita/Bioform)	40g Powder \$23.28	170g Powder \$71.15
B1 (59)	<b>S451</b>	<b>S452</b>
B2 (61)	<b>S425</b>	<b>S442</b>
A2 (62)	<b>S459</b>	<b>S447</b>
A3/D3 (65)	<b>S426</b>	<b>S443</b>
C2/D4 (69)	<b>S449</b>	<b>S450</b>
B3/B4 (77)	<b>S427</b>	<b>S444</b>
A3.5/B3 (81)	<b>S479</b>	<b>S480</b>
Clear	<b>S429</b>	<b>S434</b>

**S441 SNAP Liquid Monomer \$25.20**

# SmartTemp® DUAL CURE

PROVISIONAL  
CROWN & BRIDGE  
MATERIAL



- Flexible stage during setting allows the provisional to be manipulated and removed easily.
- High radiopacity (200% of Aluminum) — temporaries are easily seen on X-rays.
- Automix cartridge dispensing allows for a bubble/void-free mix.
- Low volumetric shrinkage and minimal exothermic heat generation for greater accuracy, fit and marginal integrity.

Stock No. **S338** \$74.59

**Includes:** One 50ml automix split cartridge (Shade A2) and 10 tips.



# absolute POLISHERS™



- Tapered shanks for enhanced accessibility.
- Top results in achieving smooth surfaces & high shine.
- Quality built - holds its shape, no crumble!
- Single use, to minimize "cross-contamination".

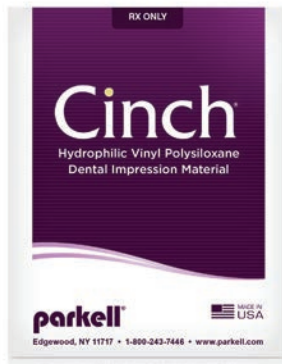
**S086 ABSOLUTE POLISHERS™ ASSORTMENT PACK \$64.14**

24/pack. Includes 5 green cup shapers, 5 green point shapers, 5 red cup smoothers, 5 red point smoothers, 2 violet diamond filled cup shiners and 2 violet diamond filled point shiners.

	<b>S080 POINT SHAPERS</b> 24/pk.	<b>\$64.14</b>
	<b>S081 CUP SHAPERS</b> 24/pk.	<b>\$64.14</b>
	<b>S082 POINT SMOOTHERS</b> 24/pk.	<b>\$64.14</b>
	<b>S083 CUP SMOOTHERS</b> 24/pk.	<b>\$64.14</b>
	<b>S084 DIAMOND POINT SHINERS</b> 12/pk.	<b>\$64.14</b>
	<b>S085 DIAMOND CUP SHINERS</b> 12/pk.	<b>\$64.14</b>







# Cinch® Cartridges

- Use as a final impression material or an alginate substitute.
- Exceptionally accurate, hydrophilic and strong.
- Choice of viscosities and setting times.
- 5 Minute Quick-Pour Formula.



**Cinch® Cartridges \$54.74**

**Includes:** Four 50ml cartridges (200ml ttl.) and mixing tips.



Name	Quick Cinch® Light	Cinch® Light	Cinch® 90 Medium	Cinch® Platinum Medium	Quick Cinch® Heavy	Cinch® AutoMix Putty
Stock No.	S461S	S460S	S453S	S454S	S463S	S456S
Set time	90 sec.	4 min.	90 sec	4 min.	90 sec.	4 min.
Working time	60 sec.	3 min.	60 sec.	3 min.	60 sec.	3 min.

## Cinch® Platinum Tubes

- No dispensing gun required.



	Set Time	Working Time	
S435	4 min.	3 min.	\$54.74

**Includes:** Four tubes (2 Catalyst & 2 Base) 320ml ttl.

## Cinch® 90 Super Cartridge

- Ideal for bulk mixing.



	Set Time	Working Time	
S464	90 sec.	60 sec.	\$126.38

**Includes:** One 380ml cartridge and mixing tips.



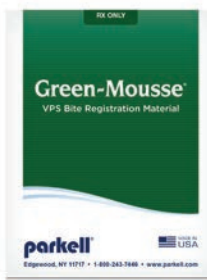
## TRIPHASIX™ ALGINATE:

- Delivers a super-smooth impression.
- Captures minute detail as small as 50 microns.
- Noticeably denser for greater dimensional stability.
- Pleasant French Vanilla scent.
- Convenient color-changing formula.



Stock No.	Qty.	
S400	1 Lb. Trial	\$13.96
S401	5 Lbs.	\$64.32
S402	10 Lbs	\$124.94
S404	25 Lbs.	\$299.73

**Includes:** One complete container, mixing scoops & water measure.



## Green-Mousse®

- Specially formulated for cases that require greater flexibility.
- 60-durometer
- Scannable
- Ideal for areas of the mouth too difficult to capture an accurate intraoral scan.

Stock No.	Set Time	
S455S	2 Min.	\$44.29

**Includes:** Two 50ml split cartridges (100ml ttl.) and mixing tips.



# Blu-Mousse®

Bite registrations, matrices, model bases, bite plates and now CAD scanning capabilities—the uses for BLU-MOUSSE® & GREEN-MOUSSE® just keep growing!



## Blu-Mousse® Cartridges

- Scannable
- Exceptional accuracy.
- Plaster-like hardness (90-durometer).
- Fluffy, no-slump consistency.
- Choice of setting speeds - 30 Seconds, 60 Seconds & 2 Minutes.

**Blu-Mousse® Cartridges \$44.29**

**Includes:** Two 50ml cartridges (100ml ttl.) and mixing tips.



## Blu-Mousse® Tubes

- Ideal for bulk mixing.
- No dispensing gun required.
- Unscented.

Stock No.	Set Time	
S436	2 Min.	\$44.29

**Includes:** One tube each of Base and Catalyst.



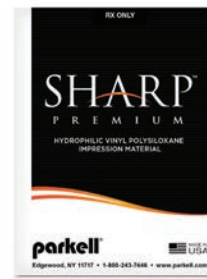
# SHARP™

PREMIUM HYDROPHILIC VINYL POLYSILOXANE IMPRESSION MATERIAL

- Exceptional hydrophilicity: equal to or better than other leading brands.
- Outstanding dimensional accuracy for dead-on stone pours.
- Superb detail replication for well-fitting restorations every time.
- Excellent tear strength for easy removal without marginal tearing.

	Color/Viscosity	Shore-A Hardness	
S510	Wash	52	\$64.53
S511	Medium	55	\$64.53
S512	Heavy	68	\$64.53

**Includes:** Two 50ml split cartridges (100ml ttl.) and mixing tips (S510 also includes intraoral tips.)



# MACH

Die-Silicone

- Flows beautifully—better than stone—to create a smoother die and to capture minute detail.
- No hand-mixing—inject it directly from the automix cartridge into impression.
- Exceptionally hard set—90+ Durometer.
- Slightly flexible, so composite inlays release easily.

Stock No.	Set Time	
S433S	30 Sec.	Mach-2® \$51.96
S430S	90 Sec.	Mach-SLO™ \$51.96

**Includes:** Two 50ml auto mix cartridges (total 100ml) plus mixing tips.





# C-I™ POSTS

[ CALIBRATED INSTRUMENT ]



## C-I™ WHITE GLASS FIBER POSTS

Parkell's C-I White Glass Fiber Posts feature enhanced radiopacity for an easier read on x-ray images. They're composed of a fiberglass/epoxy resin, whose fibers are braided like a glass splinting ribbon to improve strength, stiffness and resist fatigue. A cervical bulge reinforces the post and helps resist marginal opening due to flexing.

Each post is designed to a precise 2.6° taper for safe placement with maximum post length, smooth venting of excess cement and reduced risk of root perforation.

### C-I™ White Glass Fiber posts (prefabricated):

- S090 FINE Starter Kit: White C-I Glass Fiber post** **\$160.44**  
Kit includes 20 posts, 2 drills (B & C).  
Your Gates Glidden drill replaces the "A" drill.
- S091 FINE White C-I Glass Fiber post Refill** **\$123.07**  
Includes 20 FINE white fiber posts.
- S093 MEDIUM Starter Kit: White C-I Glass Fiber post** **\$160.44**  
Kit includes: 20 posts, 2 drills (B & C).  
Your Gates Glidden drill replaces the "A" drill.
- S094 MEDIUM White C-I Glass Fiber post Refill** **\$123.07**  
Includes 20 MEDIUM white fiber posts.

### C-I™ Plastic Burn-out & Stainless Steel Temporary posts (for custom cast post & core):



- S100 Kit # 1 FINE Starter Kit** **\$136.00**  
Kit includes: 10 FINE blue plastic burn-out posts, 10 FINE stainless steel temporary posts, 10 plastic core patterns, 3 drills-FINE (A, B, C).
- S105 #1 FINE Stainless Steel Temporary Post Refill** **\$45.80**  
Includes: 10 FINE stainless steel temporary posts.
- S106 #1 FINE Plastic Burn-out Post Refill** **\$34.49**  
Includes: 10 FINE blue plastic burn-out posts.
- S107 Kit #2 MEDIUM Starter Kit** **\$136.00**  
Kit includes: 10 MEDIUM yellow plastic burn-out posts, 10 MEDIUM stainless steel temporary posts, 10 plastic core patterns, 3 drills-MEDIUM (A, B, C).
- S112 #2 MEDIUM Stainless Steel Temporary Post Refill** **\$45.80**  
Includes: 10 MEDIUM stainless steel temporary posts.
- S113 #2 MEDIUM Plastic Burn-out Post Refill** **\$34.49**  
Includes: 10 MEDIUM yellow plastic burn-out posts.

### C-I™ Stainless Steel posts—flat head (for single visit chairside post and core):



- S114 Kit #3 MEDIUM Stainless Steel Starter Kit—flat head** **\$154.03**  
Kit includes: 20 MEDIUM flat-head stainless steel posts, 20 plastic core patterns, 3 drills-MEDIUM (A, B, C).
- S119 #3 MEDIUM Stainless Steel flat head Post Refill** **\$99.13**  
Includes: 20 MEDIUM flat-head stainless steel posts and one (1) "C"-drill.
- S120 Kit #4 FINE Stainless Steel Starter Kit—flat head** **\$154.03**  
Kit includes: 20 FINE flat-head stainless steel posts, 20 plastic core patterns, 3 drills-FINE (A, B, C).
- S125 #4 FINE Stainless Steel flat head Post Refill** **\$99.13**  
Includes: 20 FINE flat-head stainless steel posts and one (1) "C"-drill.

### Drill Refills (for all C-I™ Post Systems):



- S101 "A" FINE Drill** **\$19.04 ea.**  
(For use with all FINE posts.)
- S102 "B" FINE Drill** **\$22.52 ea.**  
(For use with all FINE posts.)
- S103 "C" FINE Drill** **\$19.85 ea.**  
(For use with all FINE posts.)
- S104 FINE Drill Set-complete** **\$57.77**  
Kit includes one (1) ea. A, B and C drills.  
(For use with all FINE posts.)
- S108 "A" MEDIUM Drill** **\$19.04 ea.**  
(For use with all MEDIUM posts.)
- S109 "B" MEDIUM Drill** **\$22.52 ea.**  
(For use with all MEDIUM posts.)
- S110 "C" MEDIUM Drill** **\$19.85 ea.**  
(For use with all MEDIUM posts.)
- S111 MEDIUM Drill Set-complete** **\$57.77**  
Kit includes one (1) ea. A, B, and C drills.  
(For use with all MEDIUM posts.)

# Diamond BURS

Diamond Burs 10 Pack **\$15.60/Pk**



CE

## MIXING TIPS

- A. S302 (yellow base) \$30.09**  
Product: Mach-2®, Mach-SLO®, SHARP™ Wash, Absolute Dentin™ 50ml  
Intraoral Tip: S303, S308 (S308 recommended for Absolute Dentin 50ml cart.)
- B. S445 (pink base) \$30.09**  
For split no-clog cartridge  
Product: Blu-Mousse®, Green-Mousse®, Cinch™ Light/Medium  
Intraoral Tip: S439IOT
- C. S496 (blue-green base) \$30.09**  
Product: MucoSoft®, MucoHard™, SHARP™ Medium/Heavy, Cinch™ Putty/Heavy
- D. S344 (blue base) \$30.09**  
Product: SmarTemp®
- E. S439K (clear base) \$30.09**  
For STANDARD cartridge  
Product: Blu-Mousse®  
Intraoral Tip: S439IOT
- F. S292 (brown base) \$30.09**  
Product: E.T.C.™, Retrieve™
- G. S328 (brown base) \$30.09**  
Product: HyperFIL™ 10ml, Absolute Dentin™ 10ml  
Intraoral Tip: S329, S335
- H. S275 (brown base -4:1) \$30.09**  
Product: SEcure®
- I. S181 Luer Lock Applicator Tip (white base) \$32.44**  
Product: Dryz™  
Comes in a package of 40
- J. S472 (Mixing-Machine Cart.) \$69.21**  
Product: Cinch™380ml Super-Cartridge
- K. S303 (yellow) \$33.00**  
Use with Mixing Tip S302
- L. S308 (dark grey) \$33.00**  
Use with Mixing Tip: S302  
Recommended for Absolute Dentin 50ml cart
- M. S439IOT (white) \$33.00**  
Use with Mixing Tip: S445, S496, S439K
- N. S329 (white) \$33.00**  
Use with Mixing Tip: S334, S521, S328
- O. S335 (white root canal) \$33.00**  
Use with Mixing Tip: S334, S521, S328



## HEDGEHOG BURS®

**\$37.07/ea**

**S498 Pear**

**S497 Flat-end Cylinder**

**S499 Ball**

**S500 Round-end Cylinder**

**S501 Long Taper**

Burs are ideal for trimming MucoSoft® relines, removing a soft reline and so much more. The modified design features longer spikes that cut even faster and resist clogging.

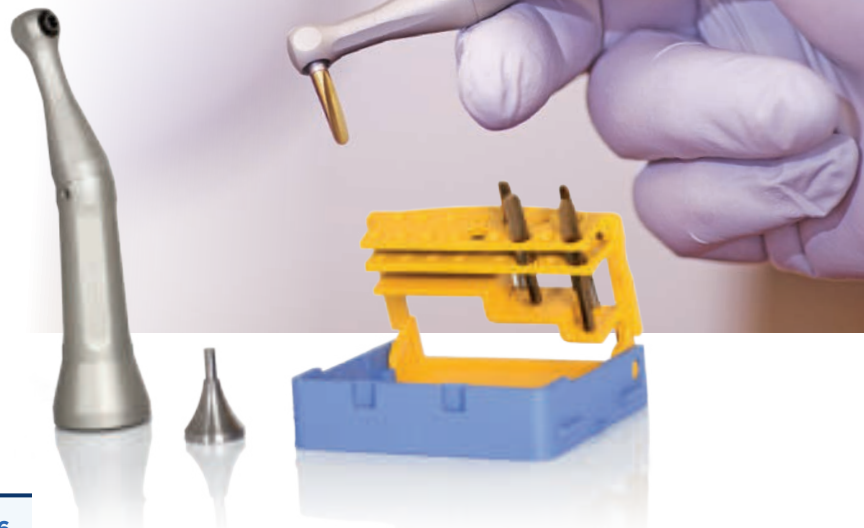




# Luxator<sup>®</sup> LX

Mechanical Periotome

**DIRECTA**  
directadental.com



## The perfect choice for extraction before Implant surgery

Setting a new standard for atraumatic extraction, the new Luxator LX mechanical periotome offers improved safety, precision and access. Reciprocating tip in a vertical direction - secure cutting of the Sharpey's fibers in a patient friendly way.

**S506443 Luxator LX Starter Kit \$1246.66**  
1 Handpiece, 2 Periotome Tips Short 2mm & 3mm, 2 Periotome Tips Long 2mm & 3mm, tip holder and plunger.

Buy a **Luxator LX StarterKit** and get a **Hand Luxator FREE!** (Choose one below)

# Luxator<sup>®</sup> Hand Periotome



## A real alternative to traumatic forcep extractions

The fine tapered blade compresses the alveolar, cuts the membrane, and gently eases the tooth from its socket reducing damage to surrounding tissue, keeping a better anatomy for an implant site.

- **Luxator Periotome Periodontal Ligament Knife** - Available in 8 blade sizes
- **Ergonomic Design** - World acclaimed handle design.
- **Dramatically Less Trauma** - Preserved bone integrity
- **Luxator Dual Edge Periotome Innovative Dual Purpose Tip** - Available in 2 blade sizes

<b>S506352</b>	<b>Luxator</b> 2 mm Straight	<b>\$126.00</b>
<b>S506340</b>	<b>Luxator</b> 3 mm Straight	<b>\$126.00</b>
<b>S506341</b>	<b>Luxator</b> 3 mm Curved	<b>\$126.00</b>
<b>S506353</b>	<b>Luxator</b> 3 mm Contra Angle	<b>\$126.00</b>
<b>S506354</b>	<b>Luxator</b> 3 mm Inv. Blade	<b>\$126.00</b>
<b>S506342</b>	<b>Luxator</b> 5 mm Straight	<b>\$126.00</b>
<b>S506343</b>	<b>Luxator</b> 5 mm Curved	<b>\$126.00</b>

**FREE Hand Luxator** with purchase of either **3 Hand Luxators** or a **Luxator LX Starter Kit.**

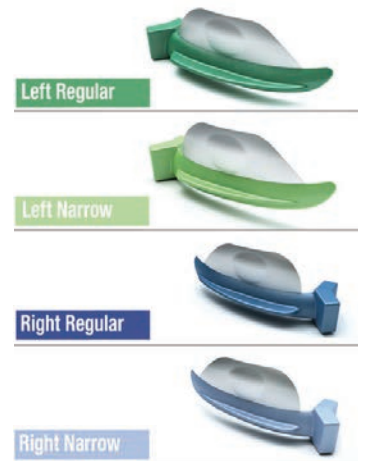


Flexible wing exerts pressure for optimal separation and cervical seal, avoiding overhang.

# FENDERMATE<sup>®</sup>

## Sectional matrix for Class II composite restorations

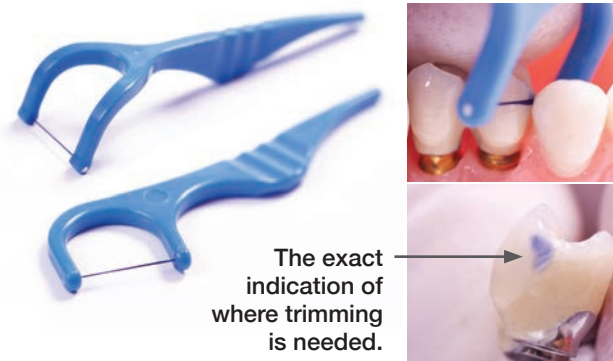
- **Predictable contact and anatomic shape** - The pre-shaped contact adapts to the proximal surface and forms the optimal contact and anatomic shape.
- **One piece design** - Matrix and wedge combined for easier and safer placement.
- **Designed for minimally invasive dentistry** - Can be inserted interproximally with minimal preparation.
- **No cervical overhang** - The wing design exerts pressure for maintained separation and cervical margin adaptation.



**S602770 FenderMate Assortment Pack \$251.40**  
72 pcs (18 left regular, 18 left narrow, 18 right regular, and 18 right narrow.)

**15% OFF FenderMate** Assortment Packs

# SpotIt<sup>®</sup> C&B contact adjustment



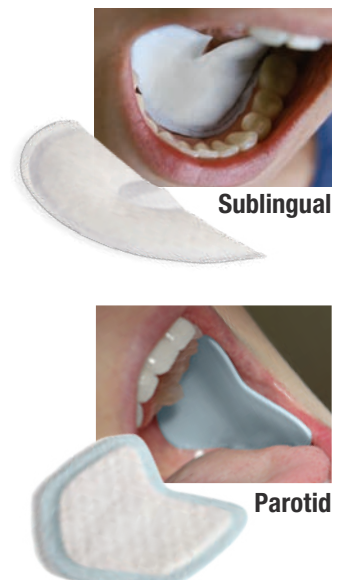
Identifying contact points on crowns and bridges has never been easy. Before cementation of conventional crowns, bridges and implant prosthetics, it is necessary to assess the relationship of the crown to the neighboring teeth. Occlusion paper is often used to check the contact point. This method however shows a too broad and inaccurate contact point with the subsequent risk of excessive adjustment, often resulting in too large contact point.

**3+1 Mix&Match** of equal or lesser value.

<b>S690110</b>	<b>Spotit Straight</b> - 18 pcs	<b>\$49.58</b>
<b>S690111</b>	<b>Spotit Angled</b> - 18 pcs	<b>\$49.58</b>
<b>S690112</b>	<b>Spotit Assorted</b> - 18 pcs (9 Straight, 9 Angled)	<b>\$49.58</b>

# DryDent<sup>®</sup> For optimal moisture control

- **Super Absorbent** - DryDent maximizes saliva absorption throughout the procedure.
- **Dry Dentistry** - DryDent absorbing properties collect saliva quickly, providing an optimal dry area for a successful treatment every time.
- **Soft and Gentle** - DryDent smooth comfortable design provides maximum patient comfort.
- **Improved Comfort** - DryDent improves patient comfort when noisy and painful saliva ejectors can be placed over the DryDent rather than over soft tissue.



**3+1 Mix&Match** of equal or lesser value.

<b>S416069</b>	<b>DryDent<sup>®</sup> Sublingual Small</b> - 50 pcs	<b>\$26.42</b>
<b>S416068</b>	<b>DryDent<sup>®</sup> Sublingual Large</b> - 40 pcs	<b>\$26.42</b>
<b>S416073</b>	<b>DryDent<sup>®</sup> Parotid Small</b> - 50 pcs	<b>\$11.99</b>
<b>S416072</b>	<b>DryDent<sup>®</sup> Parotid Large</b> - 50 pcs	<b>\$11.99</b>







Parkell, Inc., 300 Executive Drive, Edgewood, NY 11717 USA

PRSR.T. STD.  
U.S. POSTAGE  
PAID  
Ithaca, N.Y.  
Permit No. 45

Current Resident or:

# CURING LIGHT

NEW!

- Low-profile head design for easy access in all areas of the oral cavity
- High quality LEDs provide intense light that will last.
- Removable lens for easy replacement
- Tacking Lens and additional standard lens comes with the light.

**OUR NEW CURING LIGHT** is just one more example of the quality design and workmanship that we've been known for in the 70 years Parkell has been in business.

This sleek, new light features a low-profile head, so reaching into the posterior region of the mouth or sliding it into the buccal vestibule is a breeze.

The curing light also allows 3 modes of curing; 3-second tacking, 10-second cure and a 20-second cure. In addition, the light has two user-selectable intensity settings.

Choose either 1,000mW/cm<sup>2</sup> (ideal for gelling cements or curing sealants) or 2,000mW/cm<sup>2</sup> (for curing darker shaded composites, and standard curing).

The nanometer range for Parkell's Curing Light is 420nm to 480nm, the necessary ranges for today's modern dental materials. The light also features an effective beam spot diameter of 10.7 mm.

And, true to Parkell, the Curing Light comes with a 45 day trial period and a 2-year warranty.



**D553** New! Parkell® Curing Light **\$800.00**

**3 YEAR WARRANTY\***



**Includes:** Curing Light, Charging Base, power cable, tacking lens and extra standard lens.



[Parkell.com](http://Parkell.com) | [1-800-243-7446](tel:1-800-243-7446) | [Info@Parkell.com](mailto:Info@Parkell.com)



\*Visit Parkell.com for Terms of Sale, Policies, Warranty and Risk-Free Trial information.