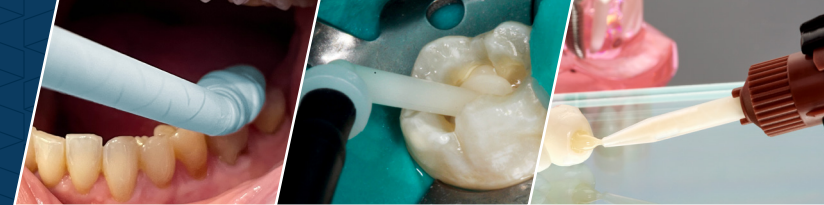


parkell® | Mixing Tip Buyer's Guide



Tips*

NEW

PLEASE NOTE: →

Four new replacement tips effective as of March 2026 (REF S545, S540, S535, S530)



Parkell Product	S545 (Replaces) S445	S540 (Replaces) S496	S535 (Replaces) S302	S530 (Replaces) S344	S472*	S390	S275	S334	S292	S328	S621	S622
Absolute Dentin™ (5 & 10 ml)								✓		✓		
Absolute Dentin™ 50 ml			✓									
Blu-Mousse®	✓											
Cinch® (Light, Quick Light, Platinum, 90)	✓											
Cinch® 380 ml Super Cartridge					✓							
Cinch® Putty, Heavy		✓										
ETC™									✓			
Green-Mousse®	✓											
HyperFIL+® (2.5 ml & 10 ml)												✓
Mach-2®			✓									
MucoSoft® 50 ml		✓										
MucoHard™ + 50 ml		✓										
Predicta® Bioactive Bulk											✓	✓
Predicta® Bioactive Core											✓	✓
Predicta® Bioactive Desensitizer						✓						
Retrieve DC™									✓			
SEcure®							✓					
SmarTemp®				✓								

Intraoral Tips*



S43910T* – For use with mixing tips S545, S540

- Blu-Mousse®
- Green-Mousse®
- Cinch® (Putty & Heavy)
- MucoSoft®
- MucoHard™+



S308* – For use with mixing tip S535

- Absolute Dentin™ (50 ml)
- Mach-2®



S329* – For use with mixing tip S328

- Absolute Dentin™ (5 & 10 ml)



S335* – For use with mixing tip S328

- Absolute Dentin™ (5 & 10 ml)



S303* – For use with mixing tip S535

- Absolute Dentin™ (50 ml)
- Mach-2®

Questions?

- Learn more at parkell.com
- Call 1-800-243-7446
- E-mail info@parkell.com

parkell®

*All tip refills include 30 tips except S472 refills which include 50 tips. All intraoral tip refills include 50 tips.