

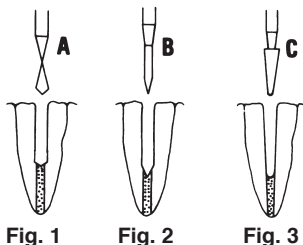
Parkell Products C-I Post Kits Nos. 3&4

Parkell's C-I Endodontic Posts are part of a calibrated instrument system designed to retain restorative cores and reinforce endodontically treated teeth, when used with an appropriate resin bonding system.

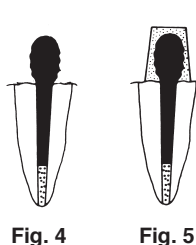
Instructions for use of C-I (Calibrated Instrument) Posts

- 1) Posthole Preparation (Fig. 1)**—Use either the two-bladed “A” post drill or an appropriate sized Gates Glidden drill to remove sufficient gutta percha from the canal to the desired depth.
- 2) Lengthening Posthole (Fig. 2)**—Use the “B” reamer to establish the final depth and width of the posthole, based upon your preferred posthole protocol. In establishing posthole depth, consider number of roots, amount of coronal tooth tissue remaining, root wall thickness, root length and post bonding system to be utilized (among other factors).
- 3) Final Calibration of Posthole (Fig. 3)**—Use the tapered, flat-bottomed “C” drill to complete the posthole preparation. Clean and dry the finished posthole with appropriate cleansers and disinfectants, and completely dry with air and paper points.
- 4) Fit the Post to the Posthole (Fig. 4)**—Length of post can be adjusted by shortening from occlusal portion. Sandblast post surface with 50 micron aluminum oxide, rinse and dry. Apply desired bonding agent to posthole, post and head, and light cure or self-cure, as per the instructions for your particular bonding agent. Coat post and posthole with dual-cure or self-cure resin cement, and insert post into posthole with flat head oriented mesiodistally. Allow to fully cure per product instructions.
- 5) Core Buildup (Fig. 5)**—Fill appropriate core former with dual-cure core resin and seat over post head. Allow to cure per product instructions. Cut off core former and complete crown preparation as usual.

Tapered calibrated postholes



Tapered calibrated posts



Helpful Hints

One visit post and core technique—Prepare posthole as described previously but do not make posthole elliptical. Prepare and insert a minipin 1mm buccal to posthole. Cement in stainless steel post. Fit an annealed copper band to the tooth stump and leave in position. Fill the copper band with a mix of composite resin or quick cure acrylic. When hardened, cut off the band and complete the tooth preparation.

Reinforcing endodontically-treated teeth with existing restorations—After endodontic treatment has been completed, remove gutta percha to desired depth. Fit stainless steel post. If necessary, steel post can be shortened from occlusal portion. Allow space for a restoration over the stainless steel post. Cement.

Salvaging existing crowns on endodontically-treated teeth with insufficient remaining tooth structure—Root canal therapy had been performed after crown was cemented on tooth. Crown has loosened because insufficient tooth structure remains but casting has a definite seat.

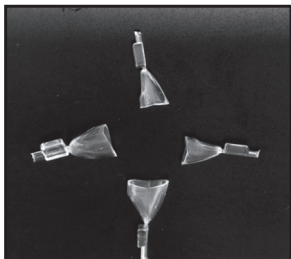
Prepare a posthole as described previously. Fit stainless steel post to canal. Shorten, if necessary from occlusal portion. Make a large mix of self cure composite. Fill posthole. Seat stainless steel post completely. Place balance of composite into crown. Insert crown into proper position on tooth stump. Wipe away excess composite and allow to set.

parkell[®]

Time-Saving Pre-Formed Core Patterns For Any Post And Core Technique

Directions For Use

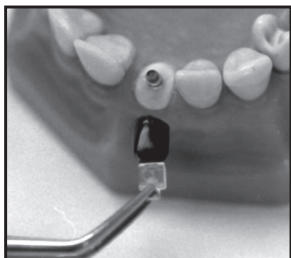
For Custom-Cast Technique:



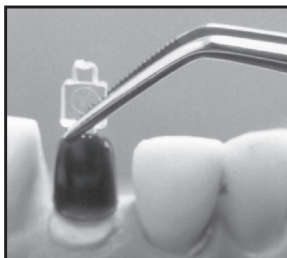
Core-Patterns are available in 6 assorted sizes.



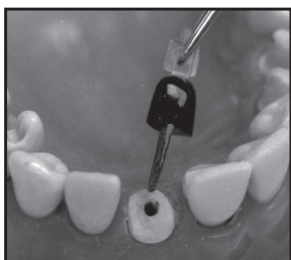
Fill selected size with inlay wax or Relate resin (stock No. S458).



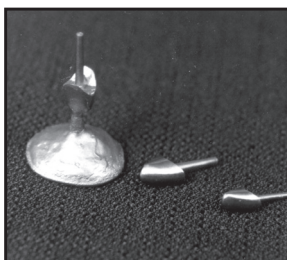
Carry filled Core-Pattern to burnout post or C-1 resin post (stock Nos. S106 or S113).



Seat filled Core-Pattern over burnout post and lute together.

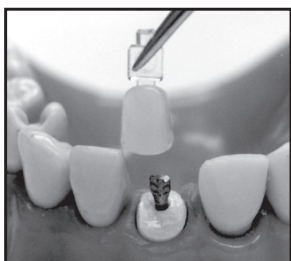


Remove post/core pattern assembly, attach sprue, invest and cast.

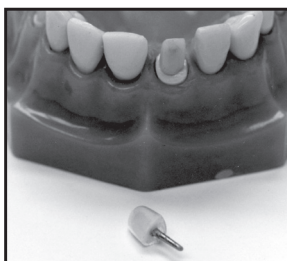


Castings

For Custom-Cast Technique:



Fill Core-Pattern with composite. Seat over any stainless steel post (like Parkell's tapered post stock Nos. S119 and S125).



Strip off Core-Pattern. Proceed as usual with impressions.

To order Core-Patterns, use stock No. S134 for pkg. of 30 assorted patterns (upper anteriors, lower anteriors; and bicuspid).

parkell[®]

Edgewood, NY 11717 • 1-800-243-7446
Fax: (631) 249-1242 • E-Mail: info@parkell.com • www.parkell.com