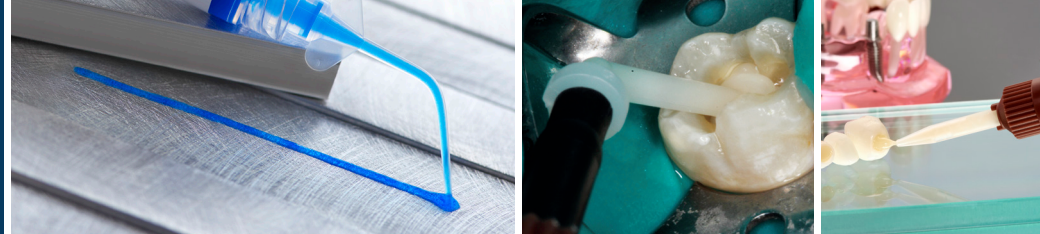


Mixing Tips Buyer's Guide



Tips



Product	S445	S344	S302	S472*	S383	S390	S439K	S496	S275	S334	S292	S328	S621	S622
Absolute Dentin™ (5 & 10ml)										✓		✓		
Absolute Dentin™ 50ml			✓											
Blu-Mousse®	✓						✓							
Cinch®	✓													
Cinch® 380ml Super Cartridge				✓										
Cinch® Putty								✓						
Cinch® Heavy								✓						
ETC™											✓			
Etching Gel					✓									
Green-Mousse®	✓						✓							
HyperFIL® 10ml												✓		
Mach-2®			✓											
MucoSoft®								✓						
MucoHard®								✓						
Predicta® Bioactive Bulk													✓	✓
Predicta® Bioactive Core													✓	✓
Predicta® Bioactive Desensitizer						✓								
Retrieve DC™											✓			
SEcure®									✓					
SmarTemp®		✓												
SmarTemp® Dual-Cure		✓												

Intraoral Tips



S439IOT* - For use with mixing tips S445, S496, S439K.

- Blu-Mousse®
- Green-Mousse®
- Cinch® (Putty & Heavy)
- MucoSoft®
- MucoHard®



S308* - For use with mixing tip S302.

- Absolute Dentin™ (50ml)
- Mach-2®



S329* - For use with mixing tip S328.

- Absolute Dentin™ (5 & 10ml)
- HyperFIL® (10ml)



S335* - For use with mixing tip S328.

- Absolute Dentin™ (5 & 10ml)
- HyperFIL® (10ml)



S303* - For use with mixing tip S302.

- Absolute Dentin™ (50ml)
- Mach-2®

Learn more at [parkell.com](https://www.parkell.com)

parkell®

*All tip refills include 30 tips except S472 refills which include 50 tips. All intraoral tip refills include 50 tips.